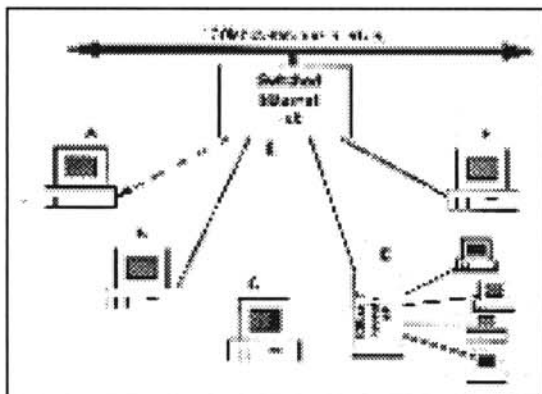
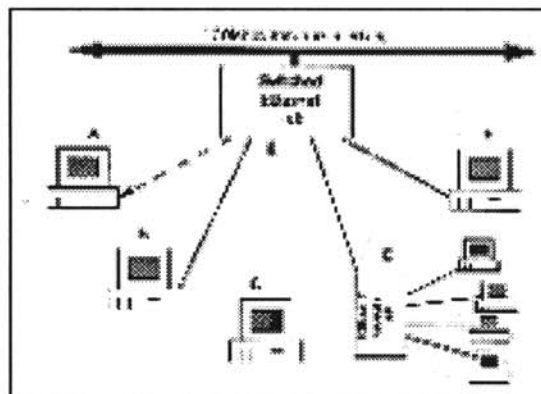


# NetVantage Ethernet Switch delivers full-wire speed at a low price with full functionality.



Workstations attached to ordinary Ethernet hubs share the same 10 mbps bandwidth.



Switched Ethernet hubs provide full 10 mbps bandwidth to each attached workstation.

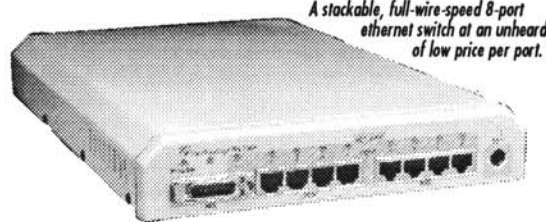
The new NetVantage high-performance Ethernet switches offer increased network throughput at an amazingly affordable price. Now you can dedicate a switched Ethernet segment to each of your servers or repeater hub workgroups at a cost of less than \$400 per switched Ethernet port.

NetVantage switches automatically reduce Ethernet collisions and boost network throughput. Internal Ethernet switching of up to 16,000 Ethernet addressees is accomplished by the NetVantage proprietary 8-port local Ethernet bridge. It bridges any-port-to-any-port at full Ethernet speed under full load.

These Ethernet switches are valuable for connecting high-performance servers to multiple workgroup segments, or for connecting

workgroup segments to a larger corporate backbone network. Many features characteristic of high priced chassis- and rack-based solution are standard equipment, including support for redundant links via 802.1d Spanning Tree Algorithm, use of FLASH memory for future software enhancements, and Virtual Network capability via SNMP Bridge MIB support.

The NetVantage Ethernet Switch brings you the power and flexibility of tomorrow's cell switched technologies such as ATM in a product for today's Ethernet networks.



A stackable, full-wire-speed 8-port ethernet switch at an unheard of low price per port.

## NETVANTAGE ETHERNET SWITCHES

DESCRIPTION	MFG NO.	PRICE EACH
NY 7500 8 PORT SWITCHING HUB	999999	\$XXXX.XX

## Features/Benefits

- Supports a total of 16,000 node addresses to accommodate large or small networks.
- Compatible with existing 10Mbit Ethernet networks.
- Expandable to accommodate future 100BaseT high speed Ethernet interface for high performance backbone connectivity, as well as FDDI, and ATM interfaces.
- Filtering and forwarding rates of 14,880 PPS per port and 120,000 PPS aggregate throughput.
- Support for per-port configurable filter entries based on MAC address or protocol type.
- SNMP manageable using standard MIB II support.
- Serial interface provided for local or remote terminal configurability.
- Supports IEEE 802.1d Spanning Tree Algorithm, allowing the configuration of redundant network connections.
- Meets FCC Class B, VDEB certification requirements.
- Stackable—up to four units for a total of 32 ethernet ports in one switch.

**CALL TOLL-FREE  
1-800-547-5444**